

kingston**arts**

kingston**arts**

Technical Specifications
Kingston City Hall

Banquet Room

985 Nepean Hwy, Moorabbin, Vic 3189

August 2025

Production Team

production@kingston.vic.gov.au

arts@kingston.vic.gov.au | 9556 4440
www.kingstonarts.com.au

Venue Services

Accessibility

Kingston City Hall's three public levels are full accessible via lift and ramps. The Lower Ground dressing rooms under the stage are not accessible, but alternative spaces are available on Level 2.

Food & Beverage

Kingston City Hall is fully licensed with a Bar on Level 2 offering drinks, snacks and tea and coffee for purchase. Ground Level has a café which can be opened for events as required.

Merchandise

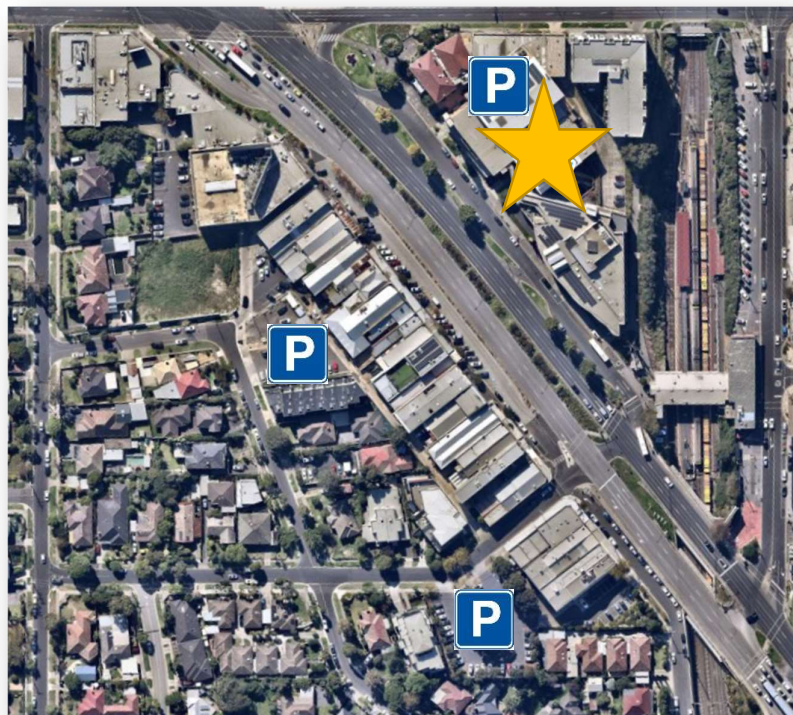
Venue Hire must be advised no later than 3 weeks prior to the event if merchandise will be sold. Please discuss requirements with the Venues Hire team.

Parking And Transport

There is parking available for hirer, crew and patrons under the Kingston City Hall and the car park directly behind as well as surrounding streets. Parking is limited with alternatives in surrounding streets. Access via the first driveway from the Nepean Highway service lane.

Moorabbin Station (Frankston Line) is directly behind Kingston City Hall. Bus Routes 627, 811, 824 (Moorabbin Station Stop)

Taxis and Ubers can drop off in the Nepean Highway Service Road directly in front of the Kingston City Hall.



Stage

See appendix # A

Auditorium

Main floor level is a flat, polished parquet surface.

All seating is set-up according to standard plans and consists of individual chairs.

Venue capacity	<ul style="list-style-type: none">• Theatre Style = 250• Banquet Style = 120• U-Shape = 120• Cocktail Style = 200
----------------	--

Stage

Stage Height 550mm

Flat stage. Screwing into surface is not permitted.

Access onto stage is via stairs either side US

No cross over

Stage Dimensions

Proscenium Width	6700 mm
Proscenium Height	2790 mm
SL to DS edge of apron	0 mm
SL to first LX Bar	300 mm
SL to last LX Bar	4370 mm
SL to rear wall	4900 mm
CL to OP wall (or obstruction)	3350 mm
CL to PS wall (or obstruction)	3350 mm
Stage to underside of roof	2900mm

Venue Plans

PDF available upon request.

Flying Facilities

None

Loading Dock

Access Truck

Access via car park off South Road.

Truck can reverse up to goods lift at right angles.

Restrictions / Obstructions

Trucks must park at right angle to loading dock.

Goods Lift

1290mm W x 2000 mm H x 3170 mm D

Drapery

None on stage

Drapery around the room.

Access Equipment

Due to access and loading restrictions, an EWP may not be brought into the venue.

Ladders:

- 1 x 1800 mm Fibreglass A frame
- 1 x 2400 mm Fibreglass A frame

Portable Staging

Kingston City Hall has a select range of risers with carpet tops to suit 300 and 600mm high legs.

9 x 1200 mm x 2400 mm risers

300 mm or 600 mm options.

Hanging Plot

SL: Setting Line, Line Type: **SP** = Single purchase, **DP** = Double purchase, **MW** = Motor Winch,

HW = Hand Winch, **HL** = Handline, W.L.L.: Maximum distributed "Working Load Limit" including bar weight

Line #	Distance from SL	Line Type	WLL	Venue Allocation
FOH 1	4700 mm	Dead Hung	100 kg	FOH1
FOH 2	6450 mm	Dead Hung	100 kg	Alt Stage Bar
LX 1	300 mm	Dead Hung	100 kg	DS Bar
LX 2	4370 mm	Dead Hung	100 kg	US Bar

Note: FOH 2 bar is at 90 degrees from the standard stage to facilitate an alternate stage position.

Lighting

Lighting configuration as per house plan includes:

LED Front wash, On stage LED Pars, Rear LED Pars

Additional Lighting provided by the venue not on the house plan will incur additional charges. Any changes to the venues standard lighting configuration must be approved by the Coordinator Production minimum of 1 month prior to the commencement of your hire.

Venue's standard rig must be restored at the end of each hire period.

Sufficient bump out time should be allowed for this process if the lighting rig is changed.

Positions

Stage LX Bars

2 x LX bar, fixed position

LX 1

Setting Line to lighting bar

300 mm

Usable bar width

8200 mm

Notes

2 x LX Patch Points, 100KG SWL

LX 2

Setting Line to lighting bar

4370 mm

Usable bar width

5800 mm

Notes

9 x LX Patch Points 100KG SWL

FOH Bar 1

Setting Line to lighting bar

4700 mm

Usable bar width

16000 mm

Notes

9 x LX Patch Points 100KG SWL

Control

Lighting desk
Vari Lite FLX S24

Control channels

Vari Lite FLX – 96 fixtures, with 1024 parameters of DMX

Signal output

DMX / 1 universe

Signal distribution

Event Lighting Split 124 active splitter is available and is part of the venue's standard lighting rig.

- 1 at LX 1
- 1 at LX 2
- 1 at FOH LX 1

Remote riggers available onstage

No

Dimmer Racks

No dimmable channels
1 x LSC PowerPoint

House Lights

Independent control

House Led Downlights system is independently controlled via two ON/OFF switches

4 x RGBWAUV LED Par for additional house lighting

Control positions

Control position is not fixed, available positions

- Rear of auditorium
- Side Stage

Fade time adjustable

LED Downlights: Yes, room is split into two zones, left and right.

RGBWAUV LED Par: Yes

Stage Luminaires

Fresnel's

Make	Model	Detail / Accessories	Watt	Total
Event Lighting	F2x48	Variable White Barn Doors	96	10

Par Cans

Make	Model	Angle	Detail / Accessories	Watt	Total
Event Lighting	Lite 12X12L	22.5	RGBWAUV	60	23

Additional Lighting Equipment*

Item	Make	Model	Detail / Accessories	Watt	Total
Hazer	Look Solutions	Unique 2.1			1
Smoke Machine	Antari	Z390 Fazer			1
Fog Jet	Antari	Z1520			1

Note:

*Charges apply, for more information please contact the Coordinator Production for a copy of our schedule of fees.

Patching

Location	Quantity	Numbering	Detail / Accessories
FOH 1	9	10-18	
LX 1	2	19-20	
LX 2	9	1-9	

Power

2 x 32amp on stage level – Dimmer Room

2 x 15amp 240V on stage level – Dimmer Room

Cabling

240v Extension Cable

The venue has a good stock of extension leads to accommodate the venues own requirements, with limited additional cable.

240v Looms

The venue has no 240v looms available. These must be hired at hirers expense if required.

3 phase Extensions

The venue has a small stock of 3 phase extensions leads to accommodate the venues own requirements with no additional stock.

Audio

Standard hire includes:

Audio console, FOH speaker system, 2 x cabled microphones,

Any changes to the standard house configuration must be approved by the Coordinator

Production a minimum of 1 month prior to the commencement of your hire and may incur additional charges.

Control Positions

Auditorium	Rear of auditorium, centred. No seats pulled
Other	PS for Monitor position

Primary Mixer	
Allen and Heath SQ6	48 channels, 12 stereo mixes (Aux/ group), 3 stereo matrix, 8 stereo FX

Banquet Room FOH:

2 x D&B Yi10P, 2-way passive point source (FOH)

2 x D&B 12S-D, 2-way passive point source (Delays)

1 x D&B 30D

Foldback

Type	Qty
QSC K12.2 Powered speakers	8

Note: Foldback speakers are shared with City Hall

Subwoofers:

2 x EV EKX-18SP 1300W Powered Sub Woofers

Microphones

Make	Model	Detail / Accessories	Use	Total
JAG	IMX6A	For Wireless	Headsets/Vocals	8
Shure	SM58	Clip	Vocal	14
Shure	Beta 58A	Clip	Vocal	7
Shure	SM57	Clip	Instrument/Vocal	16
Shure	MX202	Hanging Condenser Microphone	Choir/general coverage	6
Shure	MX418	Gooseneck Condenser Microphone	Lectern Microphone	3
Shure	MX412	Gooseneck Condenser Microphone	Lectern Microphone	3
Sennheiser	MD421	Dynamic Microphone	Toms, Sax	2
Sennheiser	E935	Dynamic Microphone	Vocal	3
Sennheiser	E904	Dynamic Microphone Drum Clip	Tom Mic	2
Sennheiser	E385	Dynamic Microphone	Vocal	1
Sennheiser	E604	Dynamic Microphone, Drum clip	Toms	1
Sennheiser	E906	Dynamic Microphone	Guitar	2
Audix	I5	Dynamic Microphone	Instrument	4
Audix	F50	Dynamic Microphone	Vocal	3
Audix	D6	Kick Drum Microphone	Kick Drum	2
Audio Technica	ATM250D (Dual Element)	Kick Drum Microphone	Kick Drum	1
Beyer Dynamic	M201	Dynamic Pencil Microphone	Hi hats/snare/overhead	2
Radial	Pro 48	Active DI Box	Direct Injection	10
Radial	Pro DI	Passive DI Box	Direct Injection	6
Radial	Pro D2	Stereo Passive DI Box	Direct injection	1
Radial	AV2	AV DI Box	Direct Injection	2
Radial	USB DI	USB DI Box	Direct Injection	1
Radial	BT Pro V2	Bluetooth DI Box	Direct Injection	1
Rode	NT5	Condenser	OH Instruments/Piano	6
Rode	NTG3B	Condenser	Shotgun	4

Wireless Microphones and Systems

All wireless microphones are used with a Sennheiser EW-DX wireless system

Make	Model	Detail / Accessories	Use	Total
Sennheiser	EW-DX EM4		Receiver	1
Sennheiser	EW-DX	Handheld Microphone e945	Vocal	4
Sennheiser	EW-DX	Bodypack		4

Accessories

Make	Model	Total
K&M	Tall Telescopic Boom stand	32
K&M	Tall Round Base	4
K&M	Short Telescopic Boom stand	8
Generic	Desktop Short Stand Round Base	15
Generic	Speaker Stands – Push Up	4

Line Patching

Location	Quantity	Numbering	Detail
Stage	16/8	16 in, 8 out	Allen and Heath DX168

Cabling

Audio Cable

The venue has a good stock of cable to accommodate its in-house equipment.

Multicore

2 x DX168 Audio Rack for Allen and Heath SQ6 console, 16 in 8 out 96kHz

Audio Notes

FOH L/R & Delay speakers are rigged in fixed positions.

Musical Instruments

Piano

1 x 5.5-foot Yamaha Baby Grand Piano Timber Finish situated in the level 2 Foyer Bar

*Piano is unable to go onto the stage, it must remain on the Banquet Room floor

**Tuning of the piano can be arranged at an additional cost. 1 month notice must be provided.

Audio Visual

Projectors

Type	Model	Detail / Accessories	Total
Epson Laser Projector	EB-L735U	7000 Lumens	1

Projection Screens

1 x Grandview 130" 16:9 Motorised Screen at rear of stage

AV Playback Equipment

Item	Model	Detail / Accessories	Total
Laptop PC	Lenovo	Playback	1
Macbook Pro M2	Apple	Playback	2
Vision Switcher	Blackmagic ATEM Mini	Black Magic	1

Projector Rigging Points

Projector is fixed on LX 1.

Cabling

The Venue has sufficient stock of cable to accommodate projection from the center of LX 1.

Backstage

Communications

None

Paging / Show relay

There is no paging or show relay system to the dressing rooms.

Stage Monitor

There is no stage monitor in the dressing rooms.

Q Light System

There is no in house Q lighting system.

Dressing Rooms

Dressing Room	Capacity	Toilets	Shower	Details
Room 1	4	0	No	Located in servery hallway
Room 2	4	1	No	Located under stage in Grand Hall
Room 3	4	1	No	Located under stage in Grand Hall

Laundry / Wardrobe

Washing Machines	NO
Dryers	NO
Drying rooms	NO
Iron / ironing board	YES
Clothes racks	4

Coin laundry is located at Moorabbin Station directly behind the venue, at hirer's expense.

Production Facilities

Production Office	NO
Internet access	YES

Greenroom

Tea / Coffee facilities	At Hirer's Expense
Fridge / freezer	YES
Microwave	NO
Running water	NO

Additional Included Stage Furniture

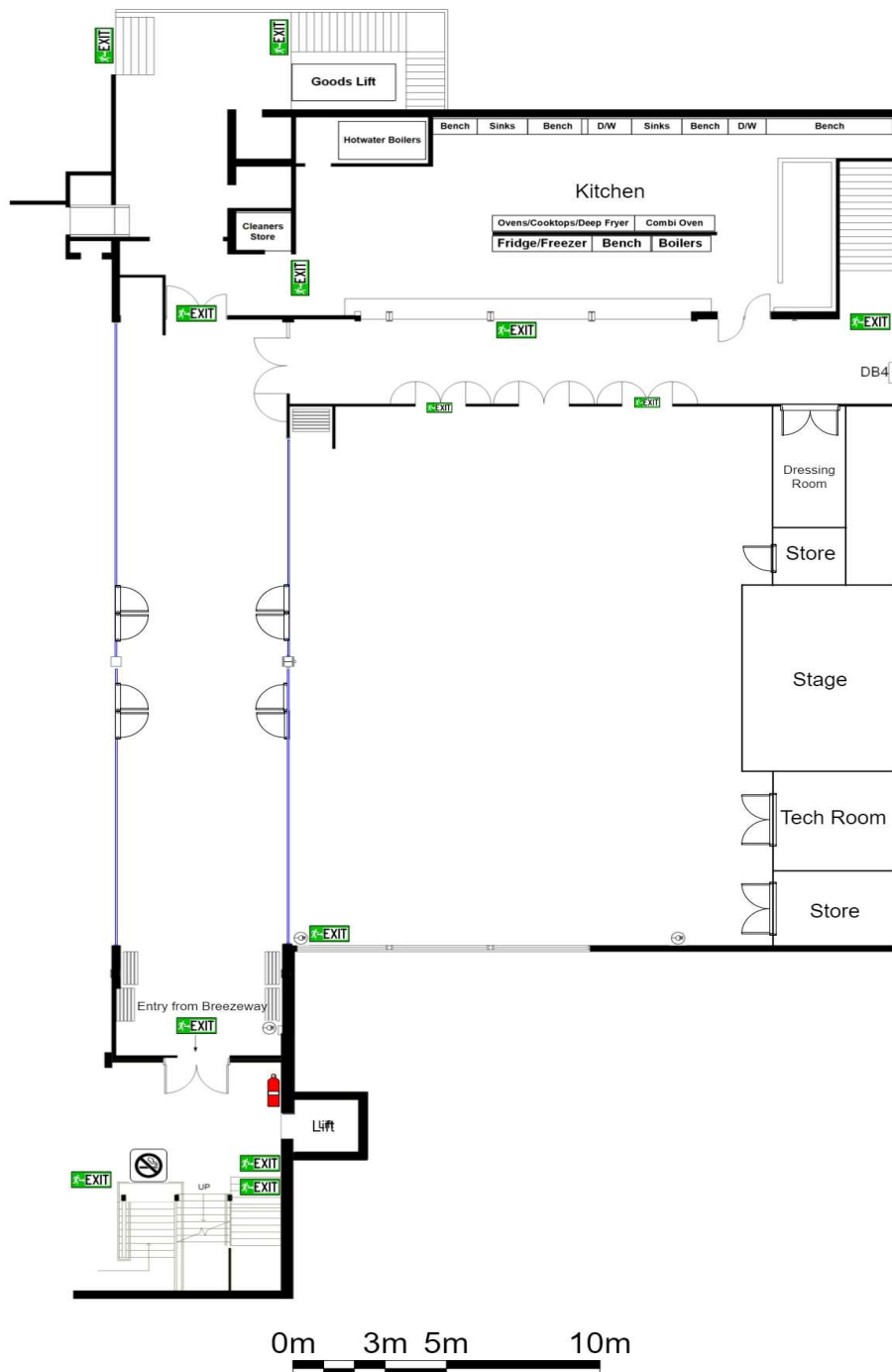
Lectern

Chairs

Trestle Tables

Appendix A – Banquet Room Stage Plan

Banquet Room



Appendix B – Banquet Room Lighting Plan

