

KINGSTON CITY HALL SOUND & LIGHTING PACKAGES 2017/2018

Package	Includes	Standard Rate (Per Day)	Community Rate (Per Day)
Package 1 1 Tech Required No Setup/Pack up Time Required	<ul style="list-style-type: none"> • Front of House PA System • Side-fill Stage Monitors • 2 x Corded Microphones & Lectern • Basic stage lighting wash 	\$630 + Labour	\$375 + Labour
Package 2 2 Techs Required 1hr Setup/1hr Pack up Required	<ul style="list-style-type: none"> • Front of House PA System • 4 x Powered monitor speakers • Full in-house Lighting including 4x standard movers • Access to our full range of corded microphone stock 	\$850 + Labour	\$510 +Labour
Package 3 3 Techs Required 2hr Setup/2hr pack up Required	<ul style="list-style-type: none"> • Front of House PA System • Monitors Desk (side of stage) • 8 x Passive Monitor wedges + Amps to suit • Full in-house Lighting including 4x standard movers • Access to our full range of corded microphone stock 	\$1350 + Labour	\$815 + Labour
Basic Schools Package			
2 Techs Required No Setup/pack up Time Required	<ul style="list-style-type: none"> • Front of House PA System • 2 x Monitor Wedges • 3 x Overhead Choir Mics, 2x Shotguns Front of Stage, 4x Handheld Microphones & Lectern • Basic stage lighting wash 	N/A	\$500 + Labour

ADDITIONAL TECHNICAL EQUIPMENT

Item	Standard Rate (Per Day)	Half Day Rate
Laptop	\$125	\$70
Projector	\$150	\$80
Cordless Microphone (Lapel or Handheld)	\$70	N/A
Hazer	\$60	N/A
Staging (portable) 1.2m depth x 2.4m width per section (10 available)	\$40	N/A

ADDITIONAL LIGHTING

2 Weeks' Notice Must Be Provided

Item	Standard Rate (Per unit per day)	Community Rate (Per unit per day)
Martin MAC250 Entour 250W Mover	\$100	\$83
Martin MAC700 Profile 700W Mover	\$140	\$114
Martin Viper Profile 1000W Mover	\$210	\$175
Robe Robin 800 LED Wash	\$85	\$65
Suggested Basic Band Package <ul style="list-style-type: none"> 4x Mac 250 Entours Hung from LX3 2x Max 250 Entours on Floor 	\$450.00 package	\$450.00 package

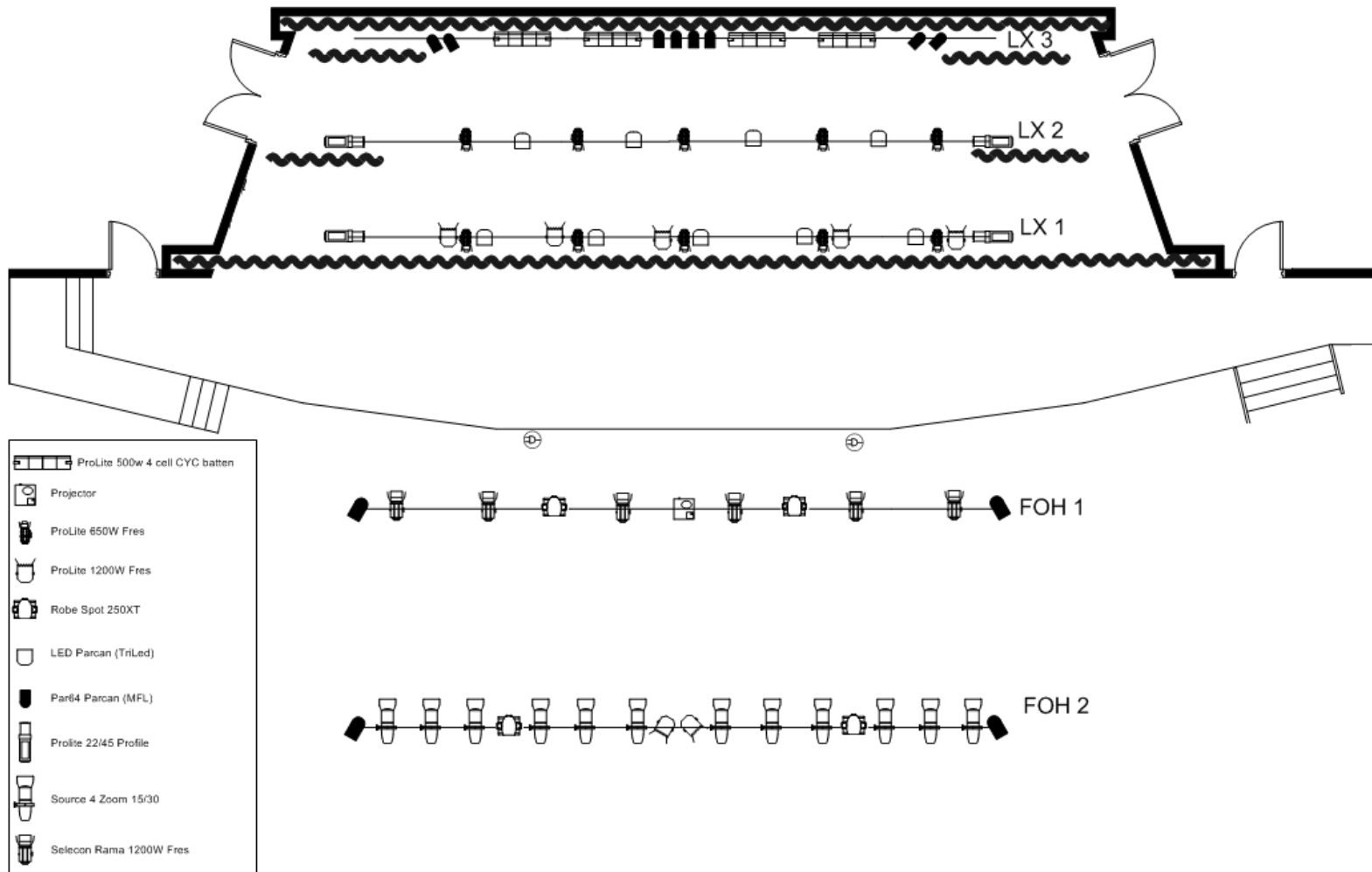
Additional lighting setup can be advised on discussion with our senior technician to suit your event

KINGSTON CITY HALL MICROPHONE STOCK

Make	Model	Detail	Suggested Use	Number Available
Shure	SM58	Dynamic Microphone	Vocal	9
Shure	Beta 58A	Dynamic Microphone	Vocal	4
Sennheiser	E935	Dynamic Microphone	Vocal	2
Shure	SM48	Dynamic Microphone	Vocal	2
Crown	CM-200A	Condenser Microphone	Vocal	1
Shure	Beta 58A RX	Wireless with Beta 58A	Vocal	8
Generic	Headset Mic	Wireless with Headset	Vocal	8
Shure	MX418	Gooseneck Condenser Microphone	Lectern Microphone	3
Shure	MX202	Hanging Condenser Microphone	Choir	5
Shure	SM57	Dynamic Microphone	Instrument	14
Rode	NT5	Condenser Microphone	OH Instruments/Piano	4
Beyer Dynamic	M201	Dynamic Pencil Microphone	Hats/Snare	2
Sennheiser	MD421	Dynamic Microphone	Toms, Sax, Trumpet	2
Audio Technica	ATM250D (Dual Element)	Kick Drum Microphone	Kick Drum	1
Sennheiser	E904	Drum Clip	Toms, Snare	2
AV-Jefe	AVL-680	Clip	Shotgun	2
Behringer	DI-100	Active DI Box	Direct Injection	9
Phonix		Active DI Box	Direct Injection	2

** Please confirm stock and requirements with our senior technician prior to your event.*

KINGSTON CITY HALL STANDARD LIGHTING RIG



KINGSTON CITY HALL IN-HOUSE PA SYSTEM

Kingston City Hall has a high quality in-house PA system consisting of...

Front of House PA Specs:



Top Boxes:	JBL AM6315/64, Tri-Amped 2 flown per side	1425 watts each = 5700 watts total
Subs:	JBL ASB6128V, Dual 18inch 1 flown per side	1900 watts each = 3800 watts total
Delay:	JBL Control 29AV	300 watts Each = 1200 watts total
		TOTAL 10,700 Watts

Monitor System Specs:



Quest Passive	Quest QM12MP, 12 inch (x8)	500 watts each
Quest Subs	Quest 600AS 15inch Sub (x3)	650 watts each
RCF Active	RCF Art 300A, 15 inch (x2) RCF Art 310A, 12 inch (x2)	360 watts each 350 watts each

Front of House Desk:

Midas Verona 480 – 48 channel

Foldback Desk:

Soundcraft GB32 – 32 Channel
8 Aux Send + Stereo + 4 Sub Groups

