

kingston**arts**

kingston**arts**

Technical Specifications

Kingston City Hall

985 Nepean Hwy, Moorabbin, Vic 3189

March 2024

Production Team

production@kingston.vic.gov.au

arts@kingston.vic.gov.au | 9556 4440

www.kingstonarts.com.au

Venue Services

Accessibility

Kingston City Hall's three public levels are full accessible via lift and ramps. The Lower Ground dressing rooms under the stage are not accessible, but alternative spaces are available on Level 2.

Food & Beverage

Kingston City Hall is fully licensed with a Bar on Level 2 offering drinks, snacks and tea and coffee for purchase. Ground Level has a café which can be opened for events as required.

Merchandise

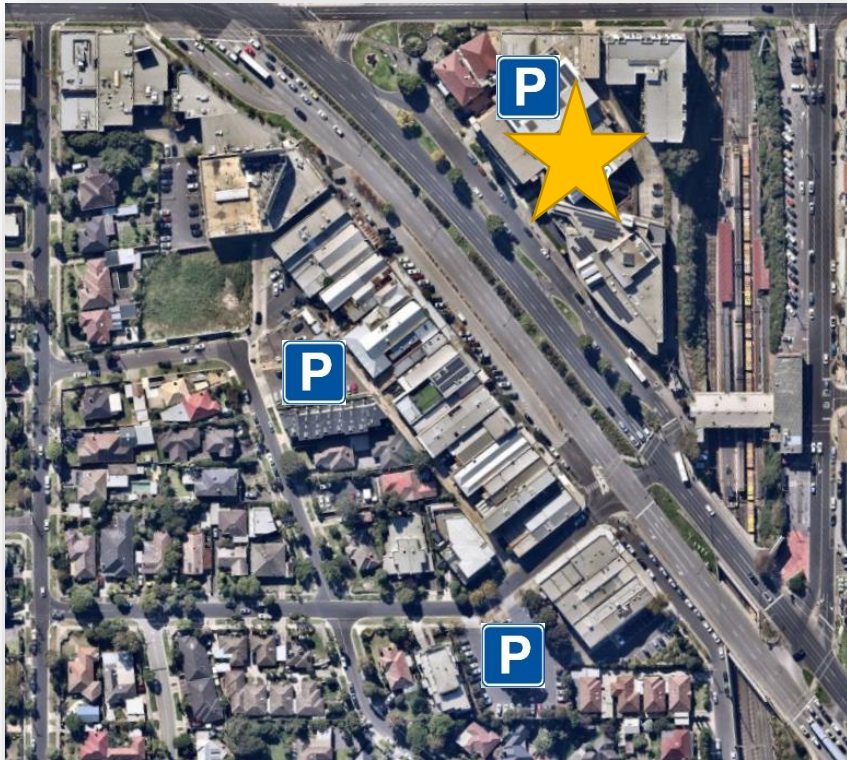
Venue Hire must be advised no later than 3 weeks prior to the event if merchandise will be sold. Please discuss requirements with the Venues Hire team.

Parking And Transport

There is parking available for hirer, crew and patrons under the Kingston City Hall and the car park directly behind as well as surrounding streets. Parking is limited with alternatives in surrounding streets. Access via the first driveway from the Nepean Highway service lane.

Moorabbin Station (Frankston Line) is directly behind Kingston City Hall. Bus Routes 627, 811, 824 (Moorabbin Station Stop)

Taxis and Ubers can drop off in the Nepean Highway Service Road directly in front of the Kingston City Hall.



Stage

See appendix # A

Auditorium

Main floor level is a flat, polished parquetry surface.

All seating is set-up according to standard plans and consists of individual chairs.

Venue capacity	Up to 950 (includes all personnel in building)
----------------	--

Stage

Slightly raked stage with parquetry flooring finished in matt black. Screwing into surface is not permitted due to concrete base.

Stage crossover located behind US tabs or US wall.

Stage Dimensions

Proscenium Width	13700 mm
Proscenium Height	US: 7000, DS: 5200
SL to DS edge of apron	3400 mm
SL to first LX Bar	335 mm
SL to last LX Bar	3930 mm
SL to rear wall	4880 mm
CL to OP wall (or obstruction)	9150 mm
CL to PS wall (or obstruction)	9150 mm
Stage to underside of roof	5800 mm

Venue Plans

PDF available upon request.

Flying Facilities

Lines on dedicated LX Bars	5
FOH Motor Winch bars	2
Hand winch bars over stage	3
Operating Position	Onstage: PS & OP – Behind Proscenium

Loading Dock

Access Truck

Access via car park off South Road.

Truck can reverse up to goods lift at right angles.

Restrictions / Obstructions

Trucks must park at right angle to loading dock.

Goods Lift

1250 mm W x 1900 mm H x 3100 mm D

Drapery

Type	Material	Colour	Width	Height	Qty
House Curtain (overlap of 1000 mm when closed)	Velvet	Ruby Red	18200 mm	6600 mm	1
Proscenium Borders	Velvet	Ruby Red	18200mm	1500 mm	1
Borders	Wool	Black	18200 mm	1500 mm	2
DS Legs	Wool	Black	3000 mm	6300 mm	2
US Legs	Wool	Black	3000 mm	6300 mm	2

Access Equipment

Due to access and loading restrictions, an EWP may not be brought into the venue.

Ladders:

- 1 x 1.8 m Fibreglass A frame
- 1 x 2.4 m Fibreglass A frame

Portable Staging

Kingston Arts Centre has a select range of risers with carpet tops to suit 300 mm and 600 mm high legs.

9 x 1.2m x 2.4m risers

300 mm or 600 mm options.

Hanging Plot

SL: Setting Line, Line Type: **SP** = Single purchase, **DP** = Double purchase, **MW** = Motor Winch, **HW** = Hand Winch, **HL** = Handline, W.L.L.: Maximum distributed "Working Load Limit" including bar weight

Line #	Distance from SL	Line Type	WLL	Venue Allocation
FOH 1	6471 mm	MW	300 kg	FOH 1 (LX)
FOH 2	10200 mm	MW	300 kg	FOH 2 (LX)
LX 1	335 mm	HW	200 kg	LX 1
LX 2	1730 mm	HW	200 kg	LX 2
LX 3	3930 mm	HW	200 kg	LX 3

Lighting

Lighting configuration as per house plan includes:
Conventional and LED Front, On stage LED Pars, Top Wash

Additional Lighting provided by the venue not on the house plan will incur additional charges. Any changes to the venues standard lighting configuration must be approved by the Coordinator Production minimum of 1 month prior to the commencement of your hire.

FOH must be bounced focused. Sufficient bump in time should be allowed for this process.

Venue's standard rig must be restored at the end of each hire period. Sufficient bump out time should be allowed for this process if the lighting rig is changed.

Positions

Stage LX Bars

3 x LX parts are on hand winches in fixed positions

LX 1

Setting Line to lighting bar
Usable bar width
Notes

335mm
12000mm
17 x LX Patch Points, End Patch Points linked 250KG SWL

LX 2

Setting Line to lighting bar
Usable bar width
Notes

1730mm
12000mm
17 x LX Patch Points, End Patch Points linked 250KG SWL

LX 3

Setting Line to lighting bar
Usable bar width
Notes

3930mm
12000mm
17 x LX Patch Points, End Patch Points linked 250KG SWL

FOH Bar 1

Setting Line to lighting bar
Usable bar width
Notes

6471mm
12500mm
18 x LX Patch Points 300kG SWL

FOH Bar 2

Setting Line to lighting bar	10200 mm
Usable bar width	12500 mm
Notes	18 x LX Patch Points 300kG SWL

Control

Lighting desk

ETC ION XE 20 with 40 faderwing

Control channels

ION – 50 physical faders, with 1024 channels of DMX

Signal output

Artnet / 4 universes

DMX / 2 universes

Signal distribution

Chauvet Professional Net X II 8 port Art net node and Jands DD-8 DMX512 active splitter are available and are part of the venue's standard lighting rig.

- 2 at control position
- 1 at each of the 3 wall patch bays
- 1 at each of the 3 floor traps
- 1 at PS
- 1 at OP
- 2 at FOH LX 1
- 2 at FOH LX 2

DMX cable is also run to LX1, LX2 and LX3 as part of the standard LX rig.

Remote riggers available onstage

No

Dimmer Racks

Total Dimmers	48
Dimmer Locations	All Dimmers are located in the dimmer room, DSPS stage

House Lights

Independent control

Overhead Chandelier system is independently controlled via ON/OFF panel

Control positions

DSPS, control position

Fade time adjustable

No, Snap

Stage Luminaires

Profiles

Make	Model	Angle	Detail / Accessories	Watt	Total
ETC	Source 4	15/30	Shutters, Gel Frame	750	12

Fresnel's

Make	Model	Detail / Accessories	Watt	Total
Selecon	Rama	Barn Doors	1200	06
Pro-lite		Barn Doors	650	11
Pro-lite		Barn Doors	1000	06

Par Cans

Make	Model	Angle	Detail / Accessories	Watt	Total
StagePar - Hex18	LED	33	RGBAWUV	18 x 12	18
Par 64	Par 64	MFL	Gel Frame	1000	12

CYC

Make	Model	Detail / Accessories	Watt	Total
Silver Star	LED AuroCyc Hex IP	Gel Frame	180	05

Movers

Make	Model	Control	Detail / Accessories	Watt	Total
Robe	Spot 250XT	16	Moving Head/Yoke	250	04

Followspot*

Make	Model	Detail / Accessories	Watt	Total
Proel			575	01

Additional Lighting Equipment*

Item	Make	Model	Detail / Accessories	Watt	Total
Mirror Ball		500mm D	Motor		01
Hazer	Look Solutions	Unique 2.1			01
Smoke Machine	Antari	Z390 Fazer			01
Fog Jet	Antari	Z1520			01

Note:

*Charges apply, for more information please contact the Coordinator Production for a copy of our schedule of fees.

Patching

Location	Quantity	Numbering	Detail / Accessories
FOH 1	18	19-36	Please note, FOH LX bars are separately patched to Onstage LX bars, numbers that match onstage bars are NOT the same patch.
FOH 2	18	1-18	
LX 1	17	17-1	Duplicate "1" @ PS
LX 2	17	18-34	Duplicate "18" @ OP
LX 3	17	35-51	Duplicate "35" @ OP
DSP Trap	2	43-44	Floor LX
DSC trap	2	41-42	Floor LX
DSOP Trap	2	39-40	Floor LX
Operating Position	2	37-38	Floor LX

Power

5 x 32amp on stage level – Dimmer Room
 2 x 32amp – PS
 1 x 32amp - OP
 1 x 32amp, 1 x 20amp - Auditorium storeroom, OP

Cabling

240v Extension Cable

The venue has a good stock of extension leads to accommodate the venues own requirements, with limited additional cable.

240v Looms

The venue has no 240v looms available. These must be hired at hirers expense if required.

3 phase Extensions

The venue has no 3 phase extensions available. These must be hired at hirer's expense if required.

Audio

Standard hire includes:

Audio console, FOH speaker system, 2 x flown side-fill foldback, 2 x cabled microphones, 8 x wireless Channels (receivers only).

Any changes to the standard house configuration must be approved by the Coordinator Production a minimum of 1 month prior to the commencement of your hire and may incur additional charges.

Control Positions

Auditorium	Rear of auditorium, centered, raised. No seats pulled
Other	PS. For smaller console, or monitor engineer position only

Primary Mixer	
Allen and Heath SQ7	48 channels, 12 stereo mixes (Aux/ group), 3 stereo matrix, 8 stereo FX

Grand Hall FOH:

8 x D&B 10AL, 2 way Line Array modules	(FOH, 4 flown per side)
4 x D&B 10AL-D, 2 way Line Array modules	(FOH, 2 flown per side)
4 x D&B 18A, 18" subwoofers	(FOH, 2 flown per side)
4 x D&B 8S, 2 way Loudspeakers	(Front Fill)
4 x D&B 8S, 2 way Loudspeakers	(Out Fill)

Foldback

Type	Qty
Quest QM-12MP 500W 2 way Passive Speakers	8
RCF ART 715A 700W Bi-Amp Powered speakers	2
RCF ART 312A 400W Bi-Amp Powered speakers	2
RCF ART 300A 300W Bi-Amp Powered speakers	2
RCF ART 310A 350W Bi-Amp Powered speakers	2

Subwoofers:

2 x EV EKX-18SP 1300W Powered Sub Woofers| 3 x Quest QM-600AS 650W Powered Sub Woofers

kingstonarts

Playback

Item	Make	Model	Detail	Total
MacBook	Apple	Pro M2	Qlab 5 (Audio +Video)	2

Microphones

Make	Model	Detail / Accessories	Use	Total
JAG	IMX6A	For Wireless	Headsets/Vocals	9
Shure	SM58	Clip	Vocal	14
Shure	Beta 58A	Clip	Vocal	7
Shure	SM57	Clip	Instrument/Vocal	16
Shure	MX202	Hanging Condenser Microphone	Choir/general coverage	6
Shure	MX418	Gooseneck Condenser Microphone	Lectern Microphone	3
Shure	MX412	Gooseneck Condenser Microphone	Lectern Microphone	3
Sennheiser	MD421	Dynamic Microphone Clip	Toms, Sax	2
Sennheiser	E935	Dynamic Microphone Clip	Vocal	3
Sennheiser	E904	Dynamic Microphone Drum Clip	Tom Mic	2
Sennheiser	E385	Dynamic Microphone	Vocal	1
Sennheiser	E604	Dynamic Microphone, Drum clip	Toms	1
Audix	I5	Dynamic Microphone	Instrument	4
Audix	F50	Dynamic Microphone	Vocal	3
Audix	D6	Kick Drum Microphone	Kick Drum	2
Audio Technica	ATM250D (Dual Element)	Kick Drum Microphone	Kick Drum	1
Beyer Dynamic	M201	Dynamic Pencil Microphone	Hi hats/snare/overhead	2
Behringer	DI-100	Active DI Box	Direct Injection	22
AV-Jefe	AVL-680	Clip	Shotgun/OH	2
Rode	NT5	Clip	OH Instruments/Piano	6
Rode	NTG3B	Clip	Shotgun	4

kingstonarts

Wireless Microphones and Systems

All wireless microphones are used with a Shure SLX wireless system

Make	Model	Detail / Accessories	Use	Total
Shure	Beta 58A SLX	Handheld Microphone	Vocal	8
Shure	SLX1	Bodypack		9

Accessories

Make	Model	Total
K&M	Tall Telescopic Boom stand	32
K&M	Tall Round Base	3
K&M	Short Telescopic Boom stand	4
Generic	Desktop Short Stand Round Base	15
Generic	Speaker Stands – Push Up	4

Line Patching

Location	Quantity	Numbering	Detail
Stage	24/12	24 in, 12 out	Allen and Heath AR2412
LX 1	3	MX202 PS/C/OP	3 lines run to LX 1 for MX202 hanging microphones.
LX 2	1	MX202 C	1 line run to LX 1 for MX202 hanging microphone.

Cabling

Audio Cable

The venue has a good stock of cable to accommodate its in-house equipment.

Multicore

2 x AR2412 Audio Rack for Allen and Heath SQ6 console, 24 in, 12 out 48kHz

Audio Notes

FOH L & R array speakers are rigged in fixed positions

Musical Instruments

Piano

1 x Wurlitzer Organ – approved players only

1 x 7' Wurlitzer Concert Grand Piano White Finish*

1 x 5'1" Yamaha G1 Grand Piano Timber Finish situated in the level 2 Bar*

*Tuning of the pianos can be arranged at an additional cost. 1 month notice must be provided.

Audio Visual

Projectors

Type	Model	Detail / Accessories	Total
Panasonic Laser projector	PT-RZ970	10000 Lumens	1

Projection Screens

Grand Hall projection is on the back wall and requires the back drape to be open.
1 x 3 m x 1.8 m push up projection screen available for other spaces.

AV Playback Equipment

Item	Model	Detail / Accessories	Total
DVD Player	Sony DVP-NS50P		1
Laptop PC	Lenovo	Playback	1
Macbook Pro M2	Apple		2
Vision Switcher	Roland V160	Roland	1

Projector Rigging Points

Projector has a mounting assembly and can be rigged from any horizontal lighting bar.

Cabling

The Venue has sufficient stock of cable to accommodate projection from the center of FOH 1 or FOH 2.

Backstage

Communications

Talkback

Master Unit	Jands EziComm E-401 Master Station. (4 ring)
Total sub stations	4
Total headsets	4
Talkback patching located at:	Dimmer Room/Control
Two-way Radios*	4

*Available upon request, additional charges may apply. Two-way radios do not connect to the talkback system.

Paging / Show relay

There is no paging or show relay system to the dressing rooms.

Stage Monitor

There is no stage monitor in the dressing rooms.

Q Light System

There is no in house Q lighting system

Dressing Rooms

Dressing Room	Capacity	Toilets	Shower	Details
Room 1	4	1	No	Located under stage
Room 2	4	1	No	Located under stage

Laundry / Wardrobe

Washing Machines	NO
Dryers	NO
Drying rooms	NO
Iron / ironing board	YES
Clothes racks	4

Coin laundry is located at Moorabbin Station directly behind the venue, at hirer's expense.

Production Facilities

Production Office	NO
Internet access	YES

Greenroom

Tea / Coffee facilities	At Hirer's Expense
Fridge / freezer	YES
Microwave	NO
Running water	NO

Additional Included Stage Furniture

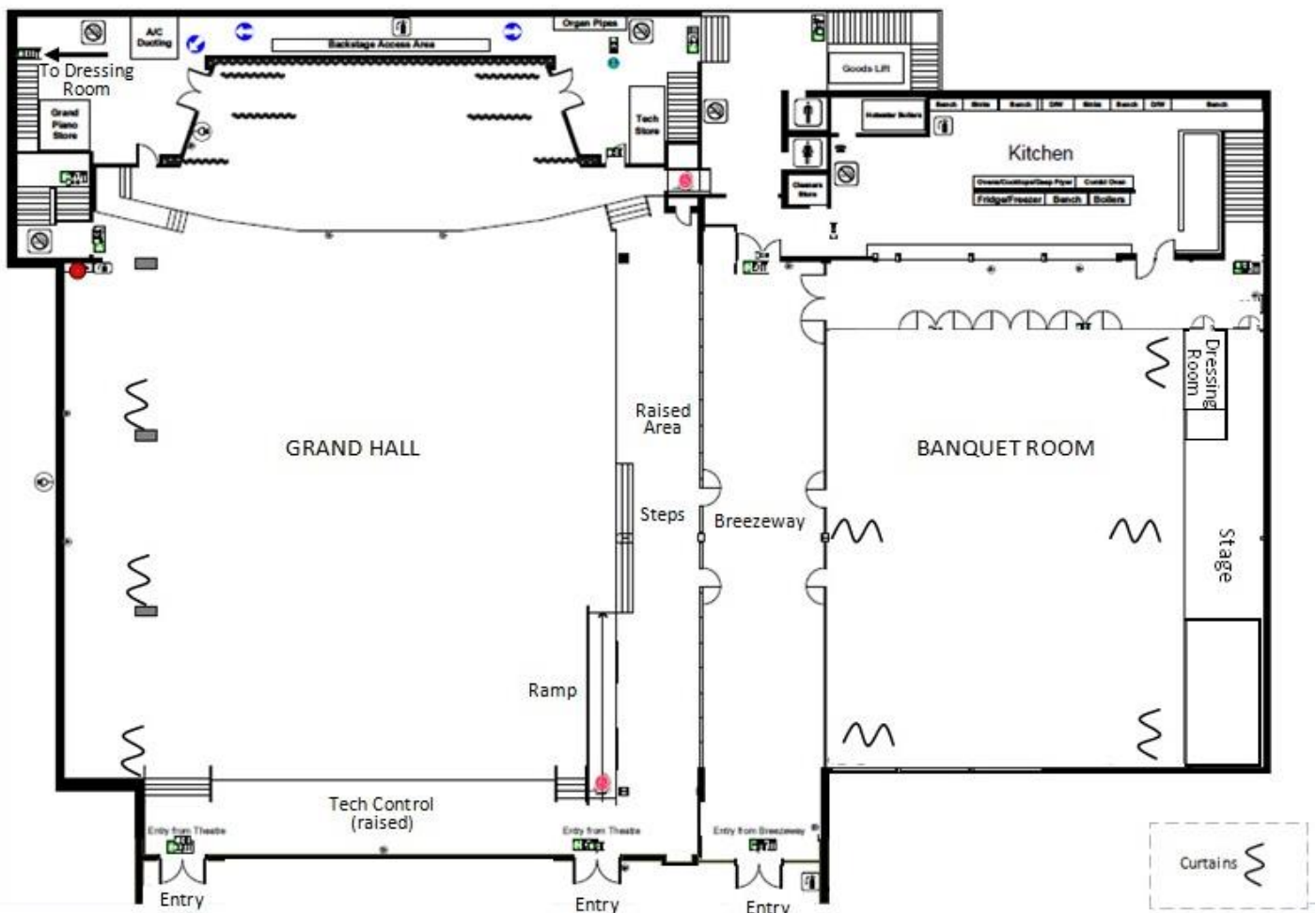
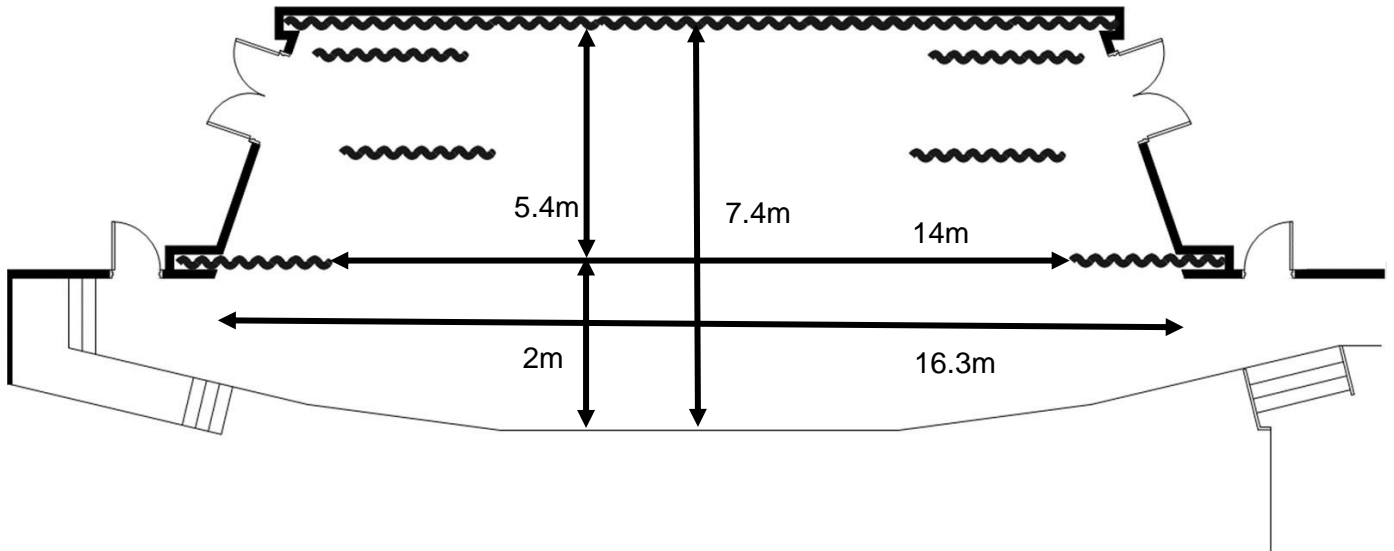
Lectern

Chairs

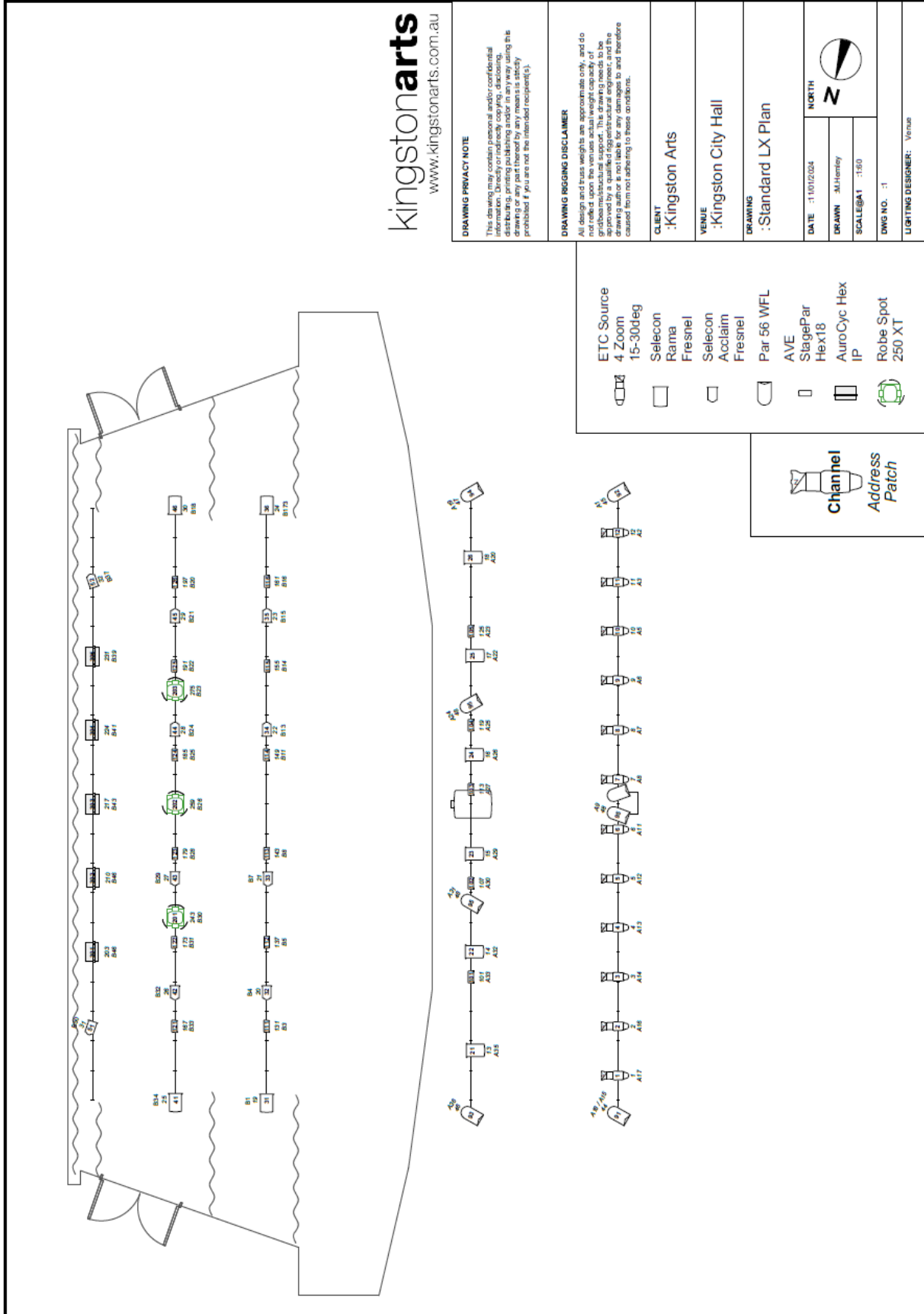
Trestle Tables

kingstonarts

Appendix A – Kingston City Hall Stage Plan



Appendix B: Kingston City Hall Lighting Plan



kingstonarts
www.kingstonarts.com.au