

2025 Exhibition Program Information Pack

Expression of Interest

kingston**arts**



Table of Contents

Kingston Arts Exhibition Program	3
Expression of Interest	4
Kingston Arts Centre - G1 Gallery	6
Kingston Arts Centre - G2 Gallery	7
Shirley Burke Theatre - G3 Gallery	8
Kingston City Hall - The BRIDGE	9
Available Exhibition Periods	10
Timeline	10
Assessment Criteria	11
How to apply	11
About Kingston Arts	12

Kingston Arts Exhibition Program

Kingston Arts Galleries & The BRIDGE are public art spaces dedicated to the presentation of contemporary art practice of artists from across our municipality, Victoria, and interstate. Kingston Arts' (KA) focus is to present exhibitions from emerging to established arts practitioners in our three accessible gallery spaces and nightly projection space. Each of the three gallery and projection spaces feature curated shows as well as exhibitions from the wider arts and cultural sector.

Through exhibitions and public programs, KA presents a dynamic contemporary art program for Kingston residents and wider Melburnian audiences. We encourage applications from a diverse range of artists from across spectrums of ability, age, cultural background, gender identity and sexual orientation. We welcome practitioners from all fields of contemporary art including sculpture, installation, moving image, painting, drawing, digital media, sound, photography, and live art.

Kingston Arts has three exhibition spaces – G1 & G2 located at Kingston Arts Centre, Moorabbin – in the old Moorabbin Council Chambers c. 1930; and G3 located at Shirley Burke Theatre, Parkdale. In addition, we have an external projection space, The BRIDGE, located at Kingston City Hall, Moorabbin.

There is no fee to exhibit. Gallery and The BRIDGE exhibition periods are of 6-week duration; with 3 days of installation and one day bump out. Exhibition opening events occur on Thursday nights, with exhibitions open to the public the following day.

G1, G2 & G3 Artspace are open to the public Wednesday – Saturday 11am – 4pm (excluding closure for install, public holidays and Christmas closure). The BRIDGE is activated daily from sunset to sunrise.

Expression of Interest

Current opportunity

EOIs will be open to submissions from 9 September to 13 October 2024. All applications must be submitted via the link available on the Collaborate page on the Kingston Arts website.

If you have any accessibility requirements, need assistance with your application, or have any questions, please contact: visualarts@kingston.vic.gov.au

EOIs that address one or more of the following criteria will be considered favourably:

- Well-considered inclusive & accessible proposals
- Proposals by under-represented community members
- Artists who reside, work and/or have a strong demonstrable connection to Kingston.
- Showcase new and/or experimental work.
- Artistic merit
- Propose accompanying public programs that complement and expand on the exhibition themes.

EOI Requirements

Applicants are required to complete the online form available on the Collaborate page on the Kingston Arts website.

In brief, applicants are required to provide (but not limited to):

- Exhibition Title
- Short social media statement (50 words max)
- Exhibition Proposal (500 words max)
- Installation Plan (what and how you intend to exhibit)
- Special Equipment Requirements (if applicable)
- Artist/s (and Curator's) CVs
- Support material – eg. minimum 5 – 10 images; video files/links
- Proposed associated public program (if applicable)

Proposals are shortlisted by a panel composed of the Kingston Arts Visual Arts Coordinator and the Curator & Collections Management Officer and external arts professionals.

Panel decisions are final and cannot be negotiated. Expressions of interest will not be considered if they do not provide the required information as outlined in this document and the online application form.

What Kingston Arts can offer successful artists:

- Stipend per exhibition space: \$1000 GST (same for group show, solo, curators inc. artists' fee)
- Curatorial support
- Professional installation support
- Access to additional exhibition furniture & equipment including: media players, screens, projectors, and plinths. (Equipment availability is limited. Please consult with KAC staff regarding your requirements, prior to submitting your application.)
- Invigilation of the gallery for the duration of the exhibition during standard opening hours
- Exhibition and associated event promotion (eg. public programs), including e-newsletters and social media.
- Exhibition signage and artwork labels
- Room sheets containing list of artworks, prices, and artist contact details (if applicable for sale)
- Exhibition opening event staffed by KA and volunteers
- Contribution towards wine, beer, soft drink, tea, or coffee for the opening event.

Successful applicants will be responsible for the following:

- Artwork delivery & collection, incl. packing & materials
- Artworks must be delivered ready to hang with professional fixtures.
- Assisting gallery staff to design and install exhibition.
- Providing information for promotional material no later than eight weeks prior to the exhibition.
- Providing list of works & values; content for artwork labels
- Sales of any artworks. (KA does not take commission)
- Any specialised equipment or display requirements, in particular specialised audio-visual equipment, artwork mounts.
- Providing opening & closing procedures (eg. for AV/Sound works)
- Transit Artwork Insurance to and from KAC and Static Artwork Insurance coverage for the duration of the exhibition
- Catering for opening event (if required)



Image: From the Exhibition (Don't say I never warned you) When your train gets lost 2022. Photo by Ross Coulter

Kingston Arts Centre

G1 Gallery

979 Nepean Hwy, Moorbabin

Open Wednesday – Saturday; 11am – 4pm (closed for exhibition changeovers and public holidays)

G1 is the largest exhibition space, located to the right of the entry into Kingston Arts Centre from Nepean Hwy.

Standard Specifications:

- Ceiling mounted track lighting
- Picture rail hanging system
- Polished floorboards
- Airconditioning
- Video surveillance
- Running metres: 27m
- Ceiling height: approx. 3.7m
- Fully accessible

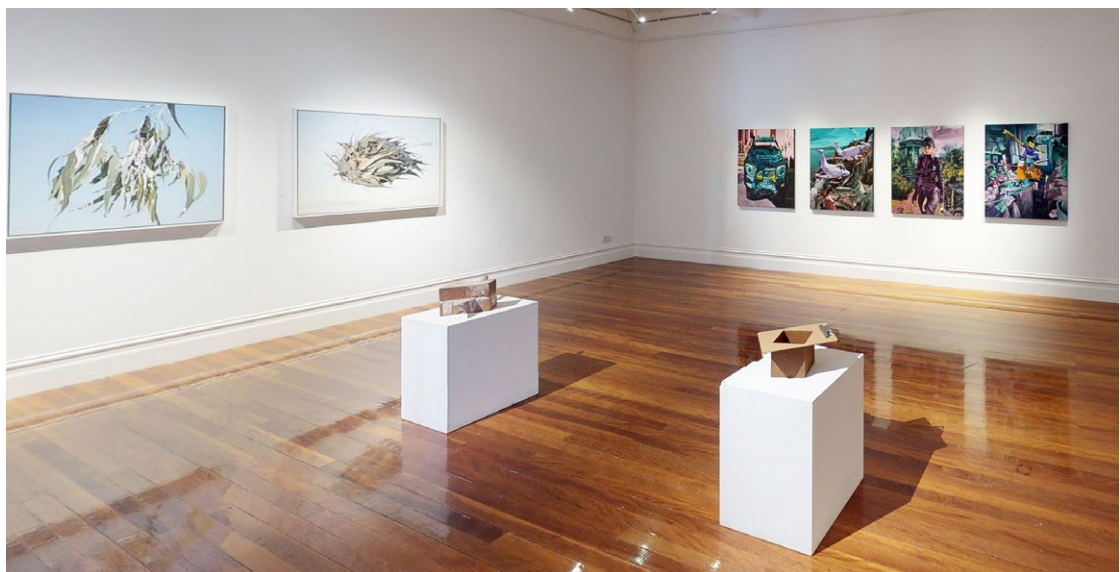
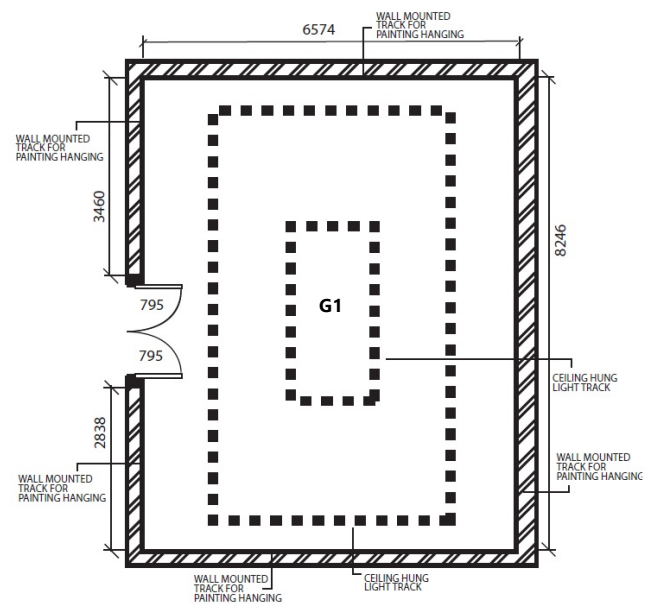


Image: From the Exhibition (Don't say I never warned you) When your train gets lost 2022. Photo by Ross Coulter

Kingston Arts Centre

G2 Gallery

979 Nepean Hwy, Moorabbin

Open Wednesday – Saturday; 11am – 4pm
(closed for exhibition changeovers and public holidays)

G2 contains standard gallery features with the addition of a separate AV room, and two windows facing onto South Road.

Standard Specifications:

- The Vault - AV/Projection room (approx. 3.4 x 2.1m) – includes black carpet, walls and curtain
- Ceiling mounted track lighting
- Picture rail hanging system
- Polished floorboards
- Airconditioning
- Two exterior windows, no blinds (North facing)
- Video surveillance
- Running metres: 22m (20m excluding Gallery windows)
- Ceiling height: approx. 3.7m
- Fully accessible

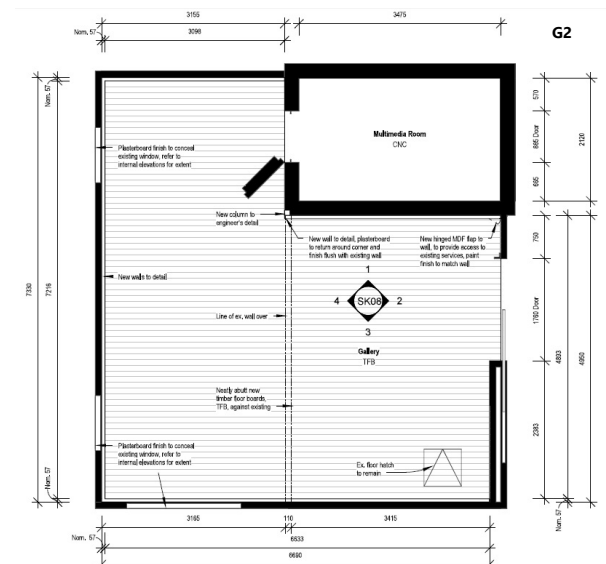


Image: From the Exhibition (Don't say I never warned you) When your train gets lost 2022. Photo by Ross Coulter

Shirley Burke Theatre

G3 Artspace

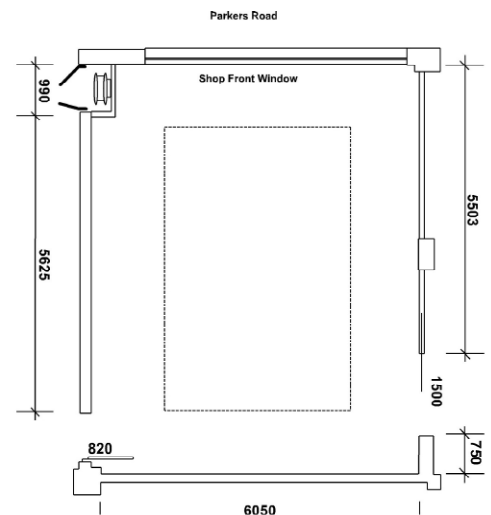
64 Parkers Road, Parkdale

**Open Wednesday – Saturday; 11am – 4pm
(closed for exhibition changeovers and public holidays)**

G3 is located at the front of the Shirley Burke Theatre with a separate entrance and street front window facing Parkers Road

Standard Specifications:

- Ceiling mounted track lighting
- Picture rail hanging system
- Interior or rear-projection screen and sound
- Polished floorboards
- Airconditioning
- Large street front window, with blinds (West facing)
- Running metres: approx. 22m (17m excluding Gallery window)
- Ceiling height: 2.8m
- Access to a limited number of plinths and movable walls
- Fully accessible



DIMENSIONS L 6.23M X W 7.76M X H 2.84M



Image: Artist - Rebecca Marshall, 2021. Photo by Hatt Harvey

Kingston City Hall

The BRIDGE

979 – 985 Nepean Hwy, Moorabbin

Open Daily, sunset to sunrise

The BRIDGE converts a disused, third story walk bridge located at the Kingston City Hall into a dedicated space for projection art. The space gives artists the opportunity to present highly visible three-channel rear projections to thousands of commuters travelling along the Nepean Highway each night.

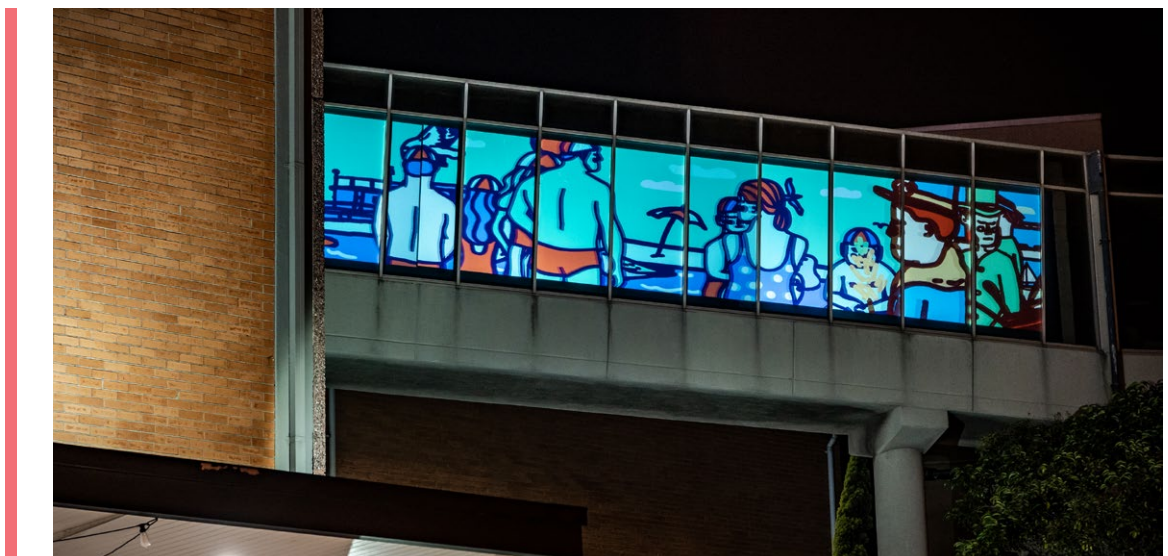


Image: Artwork by James Price 2020. Photo by Rachel Main (Shutterstock)

Standard Specifications:

- Three-channel rear projections
- 3 x EPSON EB-700U short-throw projectors integrated with Brightsign media players and software.
- Duration approx. 10-15mins
- Video and animation files are generally prepared at 24fps as a guide but can be changed depending on the project and style of your video.
- GIFs can be prepared at alternative frame rates per second, but please remember that overly glitch or strobe-light simulated media can be a health and safety risk to viewers and may not be suitable for The BRIDGE.
- Please prepare your video files as 3 separate 1920 x 1080 resolution files
- Please export files at H2.64 and .mp4 and .mov format

Available Exhibition Periods

KINGSTON ARTS CENTRE - Galleries

Gallery 1 (G1)		Gallery 2 (G2)	
Exhibition opens	Exhibition closes	Exhibition opens	Exhibition closes
17 January	1 March	17 January	1 March
6 March	19 April	6 March	19 April
31 July	13 September	31 July	13 September
18 September	1 November	18 September	1 November
6 November	10 January 2025	6 November	10 January 2025

KINGSTON ARTS CENTRE - Kingston City Hall

The BRIDGE - projection			
Exhibition opens	Exhibition closes	Exhibition opens	Exhibition closes
17 January	1 March	31 July	13 September
6 March	19 April	18 September	1 November
24 April	7 June	6 November	10 January 2025

SHIRLEY BURKE THEATRE GALLERY

Gallery 3 (G3)			
Exhibition opens	Exhibition closes	Exhibition opens	Exhibition closes
7 February	22 March	22 August	4 October
28 March	10 May	10 October	22 November
4 July	16 August	28 November	31 January 2025

EOI Timeline

Applications open	Wednesday 11 September 2024, 9:00am
Applications close	Sunday 13 October 2024, 11:59pm
Artists selected	October 2024
Successful artists notified	Early November 2024

Assessment Criteria

The application assessment will be based on:

Criteria	Description	Value
Artistic quality	Assessing the excellence and creativity demonstrated in the work.	30%
Community impact and benefit	Exploring how the exhibition can positively impact the local community, including an emphasis on fostering diversity and inclusivity across all demographics	30%
New, innovative and/or experimental work	Supporting emerging through to established artists to develop their practice and attract new audiences to KAC	20%
Overall strength of the application	Considering the clarity, coherence, and persuasiveness of the submission.	20%

Other considerations for the panel - though not essential, include:

- Artists who reside, work and/or have a strong demonstrable connection to Kingston.
- Showcase new and/or experimental work.
- Propose accompanying public programs that complement and expand on the exhibition themes

How to apply

- All applications must be submitted via the link available on the **Collaborate** page
- Contact the Kingston Arts team with any queries at **visualarts@kingston.vic.gov.au**
- Allow ample time to plan, gather support material and to draft your application (save as you go).
- Complete and submit an online application through our EOI form by the closing date. Late applications will not be accepted.

To learn more about Kingston Arts and to join our mailing list, follow this link – kingstonarts.com.au/mailling-list

About Kingston Arts

The City of Kingston boasts a vibrant arts and cultural scene, hosting a variety of arts spaces, arts and cultural organisations and services, professional and non-professional artists, creative industries and arts workers.

Kingston Arts aims to build on these strengths, increase the profile and support of creative industries within the community and foster more opportunities for creative engagement and cultural tourism.

Kingston Arts achieves this in a number of ways including through the delivery of a comprehensive and diverse calendar of performing, visual and community arts events and activities across three primary arts spaces: Kingston Arts Centre, Kingston City Hall and Shirley Burke Theatre.

Kingston Arts' performing arts programs are designed to showcase Melbourne's finest talent as well as acting as a platform for emerging artists.

For the visual arts, Kingston Arts' gallery spaces, including G1 and G2, G3 Artspace and The BRIDGE projection space, promote artistic excellence and innovation with diverse and thought-provoking programs by both professional and emerging artists.

Accessibility

All Kingston Arts exhibition spaces have free street parking around the building and dedicated mobility parking spots outside the main entrance on Nepean Hwy.

The main entrance on Nepean Hwy has automatic double doors and ramp access. The side door entry between the Town Hall has no steps.

We have wheelchair accessible gendered bathrooms at Kingston Arts Centre, and a non-gendered wheelchair accessible bathroom at Shirley Burke Theatre.

kingston**arts**

*Cover image credit: From the Exhibition (Don't say I never warned you) When your train gets lost 2022.
Photo by Hilton Stone*